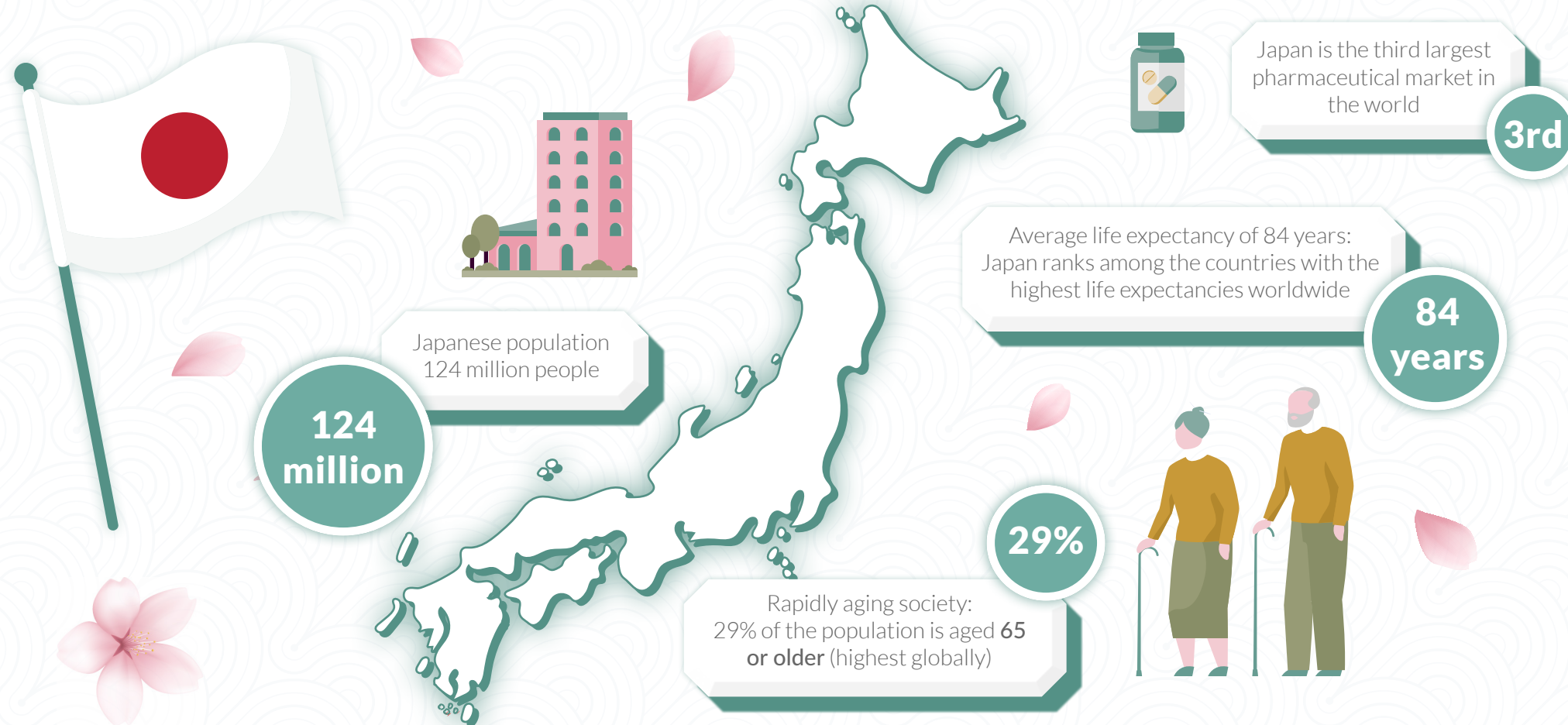


Large and aging population



Universal health care insurance system since 1961

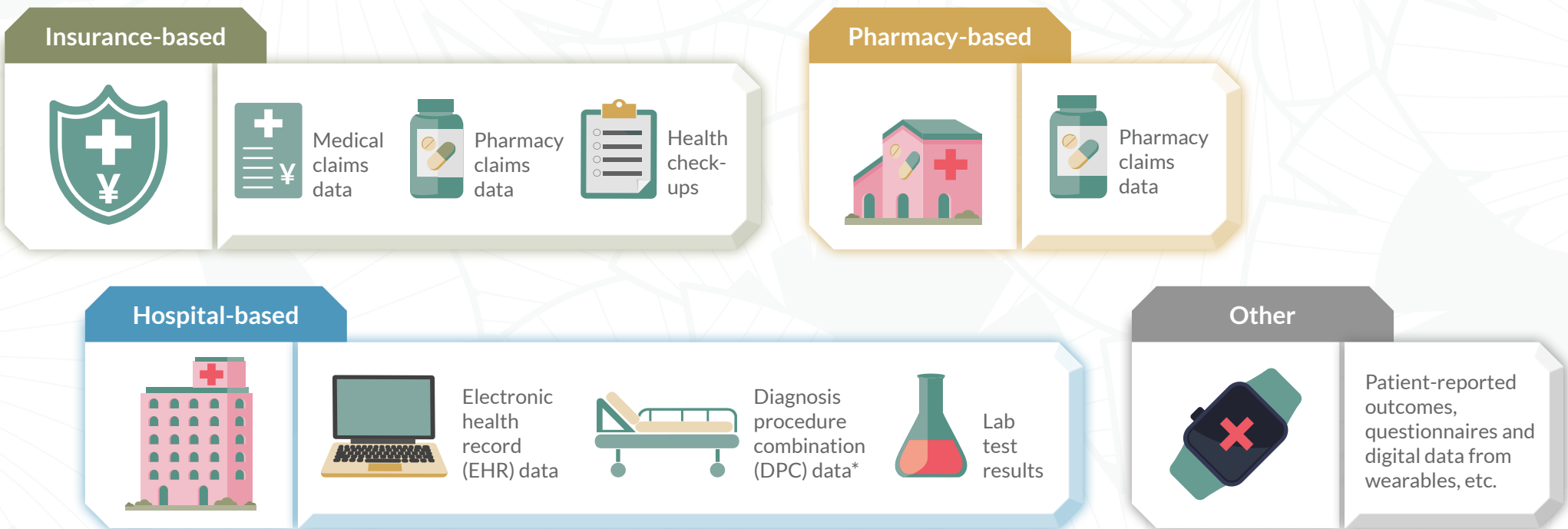
Every citizen in Japan is covered by mandatory public health insurance – covering 99% of the population for both public and private healthcare – allowing patient access to healthcare services, regardless of their social status, income, nationality or age.

Category of insurance organization	Employees' Health Insurance (Shakai Hoken)		National Health Insurance (Kokumin Kenko Hoken)	Mutual Aid Association	Medical Care System for the Advanced Elderly
	Health Insurance Societies	Japan Health Insurance Association (JHIA)			
Who is covered	Employees of large companies and their families	Employees of small-to-medium companies and their families	Self-employed, part-time workers, students, or currently unemployed	Public servants, teachers	All people aged 75 years and over
Number of insurers	1458	1	1888	85	47
Number of people covered	~30 million	~35 million	~39 million	~9 million	~14 million

A goldmine of real-world data

Japan's universal health insurance system generates comprehensive real-world data (RWD) through systematic collection across the entire population, making it invaluable for longitudinal health analysis, epidemiological studies, and healthcare policy research.

Types of data and RWD databases available for research in Japan



The result is one of the world's most comprehensive real-world evidence (RWE) ecosystems for healthcare research.

*DPC: Original Japanese patient classification system, based on a combination of diagnoses and procedures and is used for reimbursements for hospitalization.

Characteristics of databases

Each year, the Japanese Society for Pharmacoepidemiology publishes the characteristics of databases applicable to pharmacoepidemiology and clinical epidemiology in Japan. In 2024, they listed 20 patient-level databases from academia, government, or industry that were accessible to third parties for clinical or pharmacoepidemiological studies.



- Suitable for assessing medication safety, effectiveness, treatment patterns and healthcare resource utilization
- Size, type of data and degree of accessibility varies across databases
- Differences in their characteristics mean that the appropriate database must be carefully selected for a particular study purpose

Example databases

EBM Provider®

- Organizer: Medical Data Vision Co., Ltd
- Type of database: Hospital- and insurance-based database
- Data sources: DPC, medical claims, EHRs, lab tests
- Collected from: 522 hospitals and 1022 insurers
- Population: 52 million people (hospital) and ~25 million people (insurers)
- Data access for pharmaceutical companies: Yes
- Data collection period:
 - Hospital-based database: April 2008 to March 2025
 - Health-insurance database: April 2012 to February 2025

National Database of Health Insurance Claims and Specific Health Checkups of Japan

- Organizer: Ministry of Health, Labour and Welfare (MHLW)
- Type of database: Health insurance-based database
- Data source: Medical claims, health check-ups
- Collected from: All health insurance associations nationwide
- Population: ~125 million people (almost entire population)
- Data access for pharmaceutical companies: No
- Data collection period: 2008 to 2024

TXP Medical Database

- Organizer: TXP Medical Co., Ltd
- Type of database: Hospital-based database
- Data sources: DPC, EHRs, lab tests, other
- Collected from: ~35 facilities
- Organizations: 35
- Population: ~26 million people
- Data access for pharmaceutical companies: Yes
- Data collection period: 2017 to 2024

JMDC Hospital Database

- Organizer: JMDC, Inc.
- Type of database: Hospital-based database
- Data sources: DPC, medical claims, EHRs, lab tests
- Collected from: 1001 hospitals
- Population: ~38 million people
- Data access for pharmaceutical companies: Yes
- Data collection period: Before 2000 to 2024

Medical Information Database Network (MID-NET)

- Organizer: Pharmaceuticals and Medical Devices Agency
- Type of database: Hospital-based database
- Data sources: DPC, medical claims, EHRs, lab tests
- Collected from: 33 facilities
- Population: ~8 million people
- Data access for pharmaceutical companies: Yes (post-marketing studies only)
- Data collection period: 2009 to 2024

JMDC Payer database

- Organizer: JMDC, Inc.
- Type of database: Insurance-based database
- Data sources: Medical claims, health check-ups
- Collected from: 335 hospitals
- Population: ~20 million people
- Data access for pharmaceutical companies: Yes
- Data collection period: 2005 to 2024

NIHON CHOUZAI Prescription Database

- Organizer: Japan Medical Research Institute Co., Ltd
- Type of database: Pharmacy-based database
- Data sources: Pharmacy claims, other
- Collected from: 743 organizations
- Population: ~23 million people
- Data access for pharmaceutical companies: Yes
- Data collection period: 2001 to 2024