

Erratum

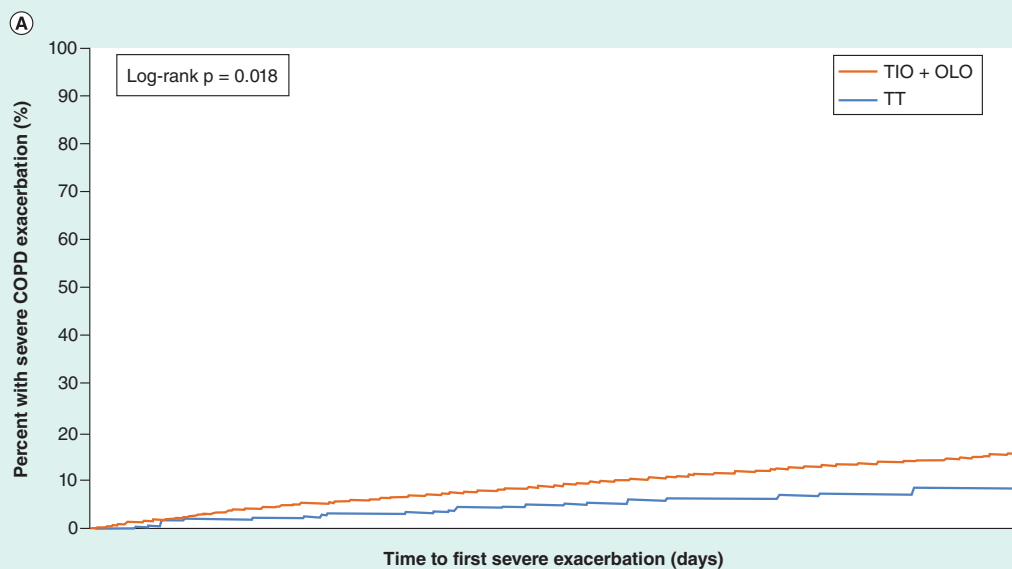
For reprint orders, please contact: reprints@futuremedicine.com

In the Research Article by Swetha R Palli, Ami R Buikema, Mary DuCharme, Monica Frazer, Shuchita Kaila & Timothy Juday, “Costs, exacerbations and pneumonia after initiating combination tiotropium olodaterol versus triple therapy for chronic obstructive pulmonary disease”, which appeared in the November 2019 issue of the *Journal of Comparative Effectiveness Research* (8[15], 1299–1316 [2019]), some errors occurred in the reproduction of Figure 4A and 4B.

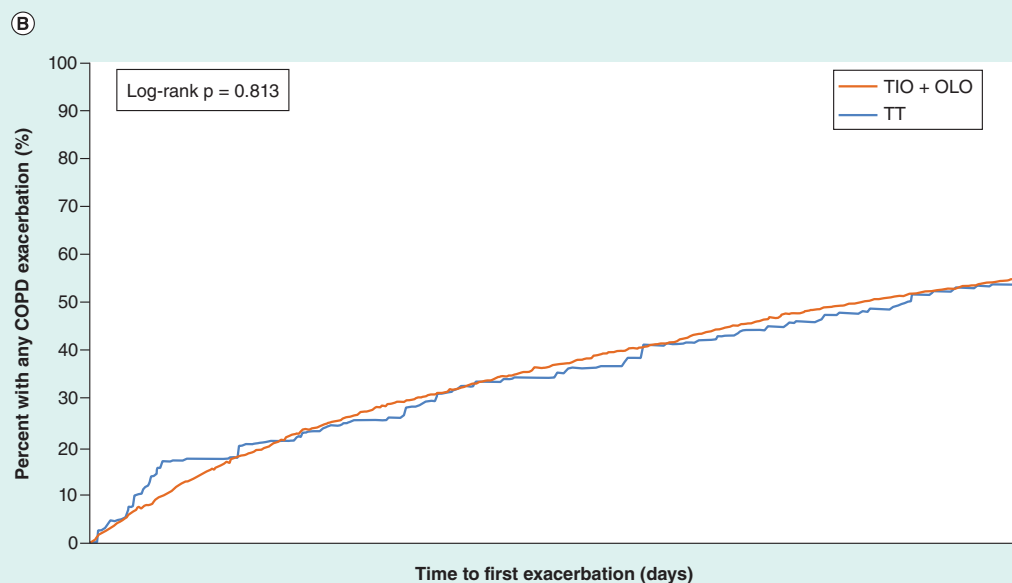
For both Figure 4A and 4B the legends were reversed. The TIO + OLO legend should have been indicated as ‘blue’, and the TT legend should have been indicated as ‘red’. While the legends were incorrect, the KM curves and the numbers supporting them were shown correctly.

In addition, for Figure 4B, there was an error in the p-value. The p-value was listed as $p = 0.813$, whereas it should be listed as $p = 0.816$.

The figure originally appeared as:

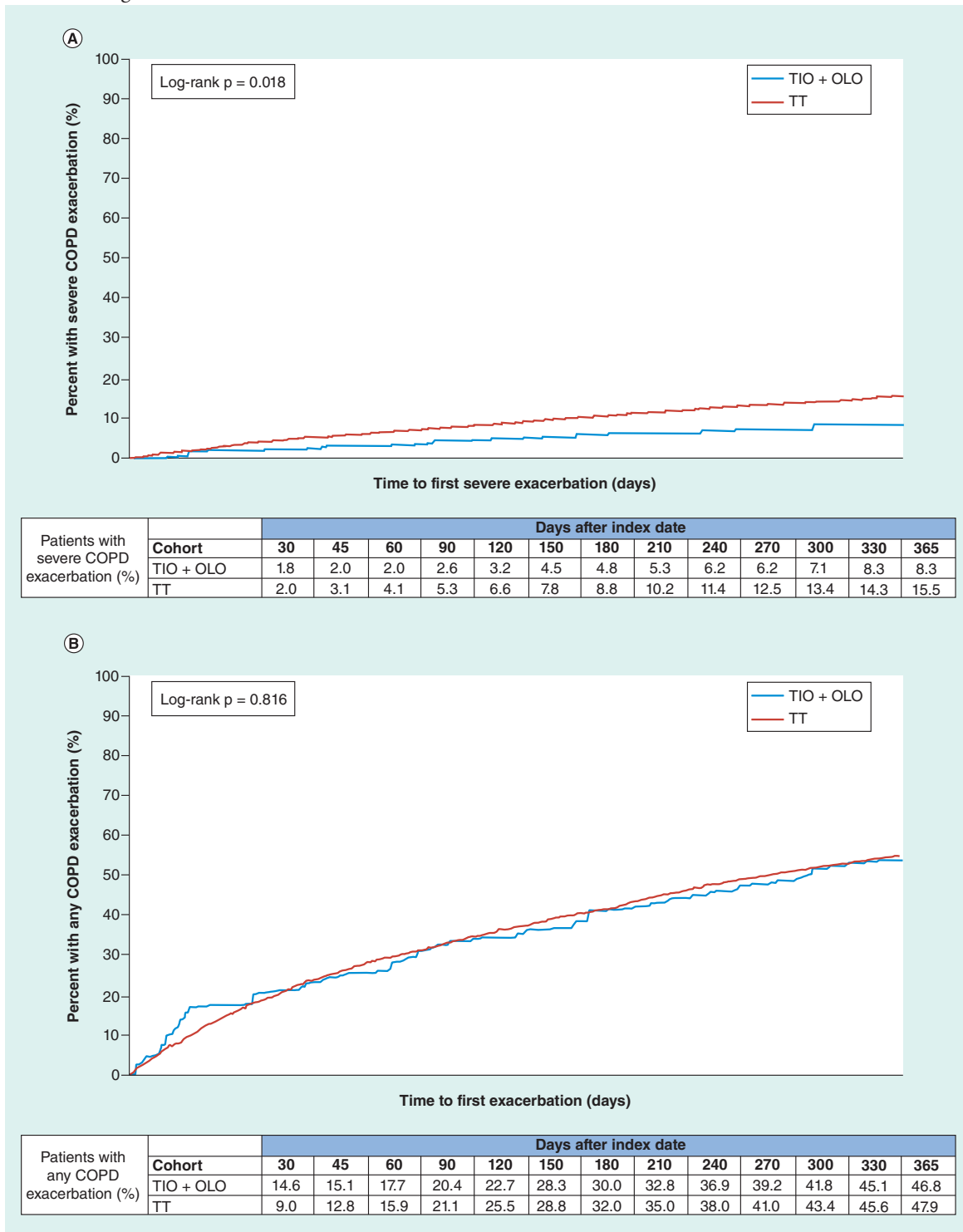


% of patients with severe COPD exacerbation	Cohort	Days after index date												
		30	45	60	90	120	150	180	210	240	270	300	330	365
	TIO + OLO	1.8	2.0	2.0	2.6	3.2	4.5	4.8	5.3	6.2	6.2	7.1	8.3	8.3
	TT	2.0	3.1	4.1	5.3	6.6	7.8	8.8	10.2	11.4	12.5	13.4	14.3	15.5



% of patients with any COPD exacerbation	Cohort	Days after index date												
		30	45	60	90	120	150	180	210	240	270	300	330	365
	TIO + OLO	14.6	15.1	17.7	20.4	22.7	28.3	30.0	32.8	36.9	39.2	41.8	45.1	46.8
	TT	9.0	12.8	15.9	21.1	25.5	28.8	32.0	35.0	38.0	41.0	43.4	45.6	47.9

The correct figure is:



The editors of the *Journal of Comparative Effectiveness Research* would like to sincerely apologize for any inconvenience or confusion this may have caused our readers.